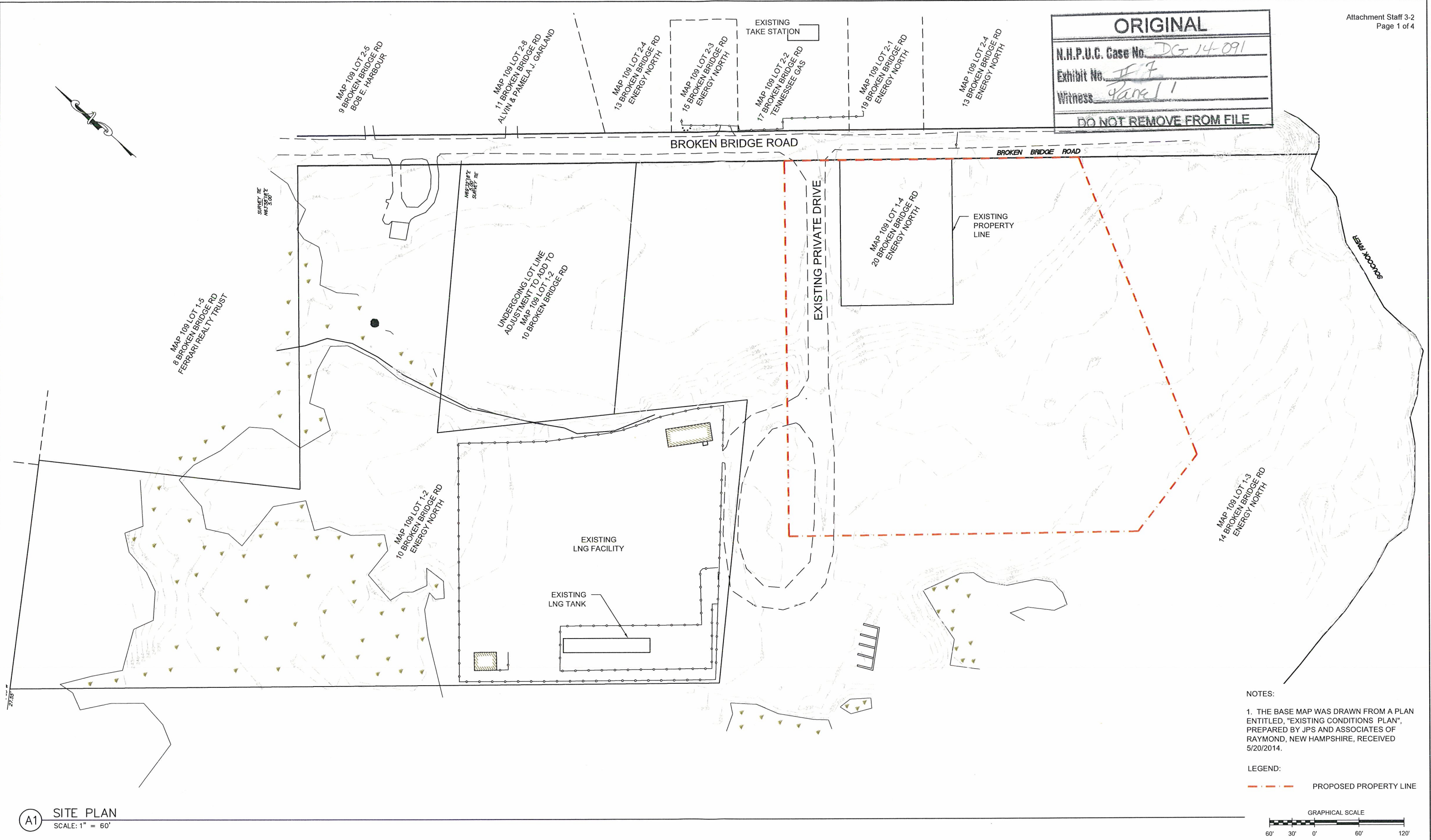


ORIGINAL

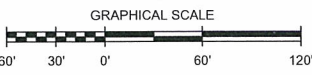
N.H.P.U.C. Case No. DG 14-091
Exhibit No. 7
Witness Panel 1

DO NOT REMOVE FROM FILE



NOTES:
1. THE BASE MAP WAS DRAWN FROM A PLAN ENTITLED, "EXISTING CONDITIONS PLAN", PREPARED BY JPS AND ASSOCIATES OF RAYMOND, NEW HAMPSHIRE, RECEIVED 5/20/2014.

LEGEND:
- - - - - PROPOSED PROPERTY LINE



A1 SITE PLAN
SCALE: 1" = 60'



DRAFT

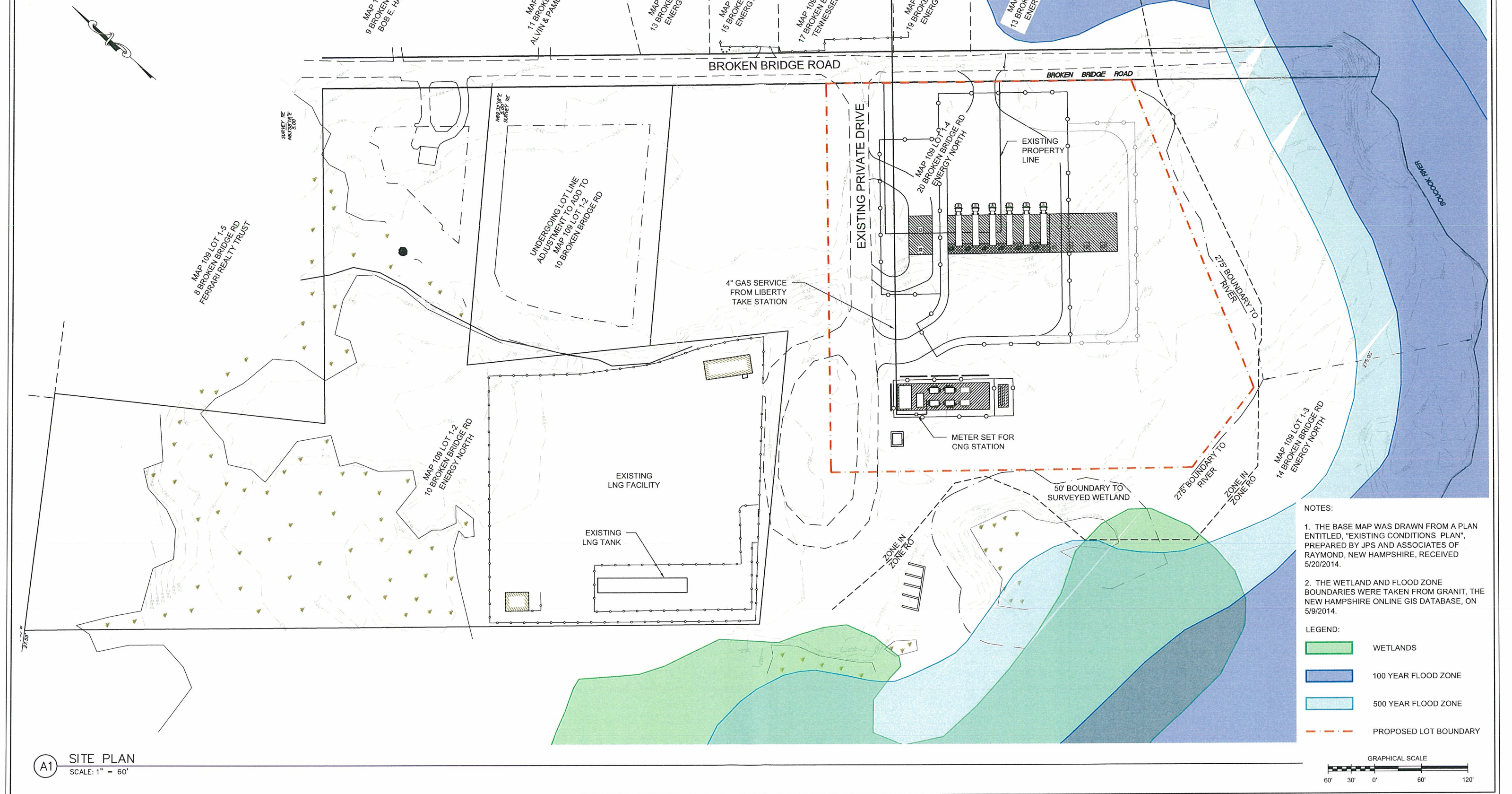
0	5/21/2014	PRELIMINARY ISSUE		DRH

DRAWN BY: ABW
DESIGNED BY: DRH
REVIEWED BY: MAN
PROJECT MGR: JMF
PIC: MAN
DATE: MAY 2014

BROKEN BRIDGE - CNG FACILITY DESIGN
LIBERTY UTILITIES
CONCORD, NH

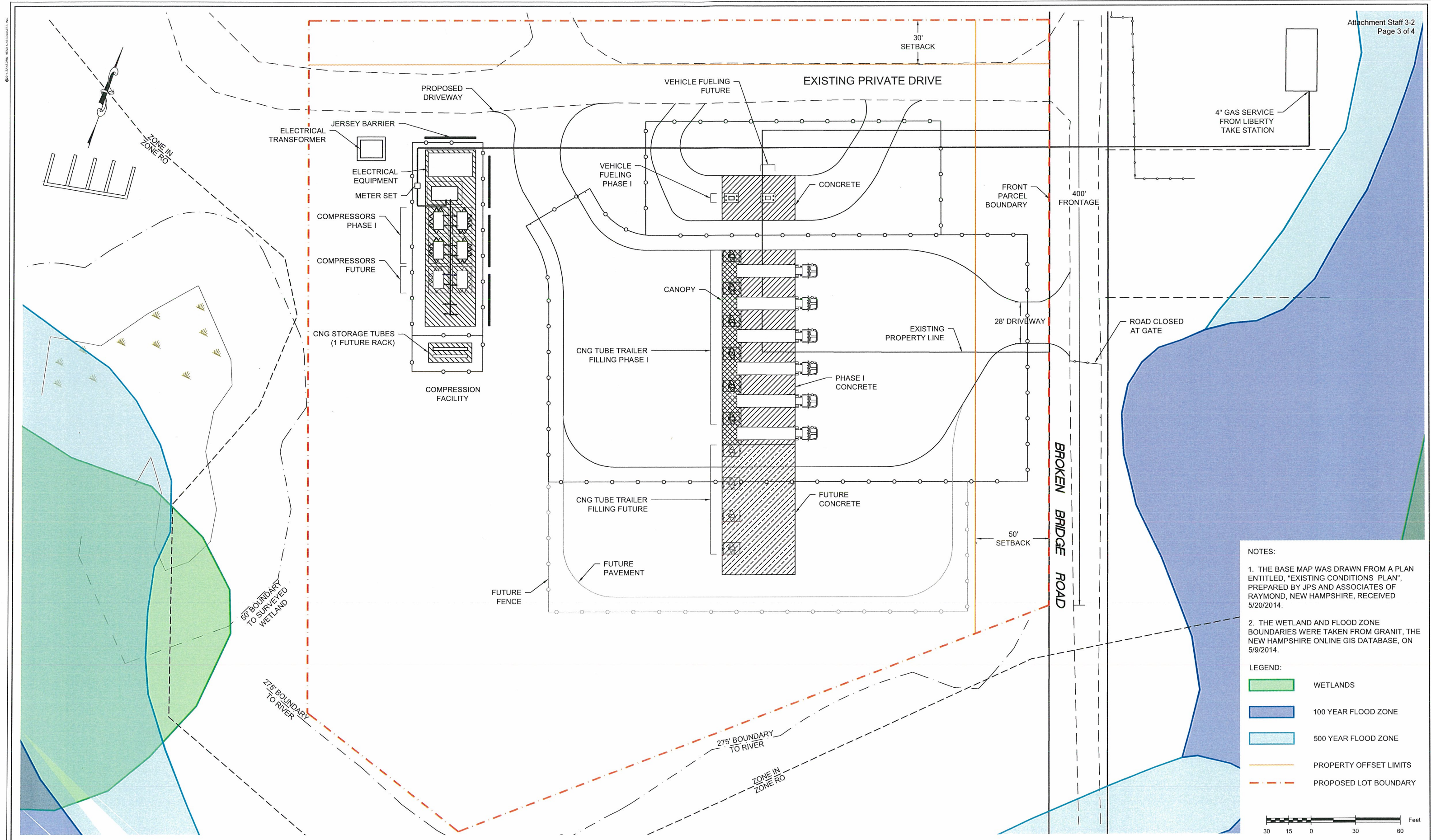
SITE PLAN

PROJECT NUMBER:
3672.01
SHEET NUMBER:
M-101-A



© 2014 SANBORN HEAD & ASSOCIATES, INC.

2: 2014 05/21/14



NOTES:

1. THE BASE MAP WAS DRAWN FROM A PLAN ENTITLED, "EXISTING CONDITIONS PLAN", PREPARED BY JPS AND ASSOCIATES OF RAYMOND, NEW HAMPSHIRE, RECEIVED 5/20/2014.
2. THE WETLAND AND FLOOD ZONE BOUNDARIES WERE TAKEN FROM GRANIT, THE NEW HAMPSHIRE ONLINE GIS DATABASE, ON 5/9/2014.

LEGEND:

- WETLANDS
- 100 YEAR FLOOD ZONE
- 500 YEAR FLOOD ZONE
- PROPERTY OFFSET LIMITS
- PROPOSED LOT BOUNDARY

30 15 0 30 60 Feet



DRAFT

0	5/21/2014	PRELIMINARY ISSUE		DRH	

DRAWN BY: ABW
DESIGNED BY: DRH
REVIEWED BY: MAN
PROJECT MGR: JMF
PIC: MAN
DATE: MAY 2014

BROKEN BRIDGE - CNG FACILITY DESIGN
LIBERTY UTILITIES
CONCORD, NH
EQUIPMENT GENERAL
ARRANGEMENT PLAN

PROJECT NUMBER:
3672.01
SHEET NUMBER:
M-101-C

